

How the EDC can help

The EDC is uniquely positioned to help your expanding or relocating business take full advantage of resources available including:

- Site selection
- Permitting assistance
- Incentive programs information
- Demographics and market research
- Workforce development assistance
- Connections to public/private resources

# Bring your business to St. Lucie County

With no personal income tax and a variety of affordable housing choices, St. Lucie County is a low-density, low-crime livable community with small town charm and all the amenities of a large city. Florida's stable and highly favorable tax climate provides advantages that make our region profitable for every type of business while also offering unlimited expansion potential. It also houses first-rate universities, providing workforce education and training. To add to the allure, St. Lucie County's natural resources are enviable, with more than 21 miles of pristine coastline and beaches, more than 20,000 acres of public parks and natural preserves, and miles of rivers and waterways.



CONTACT US TODAY

**Pete Tesch, President**  
Economic Development Council of St. Lucie County, Inc.  
500 NW California Boulevard  
Port St. Lucie, FL 34986  
(772) 336-6254 or ptesch@youredc.com

youredc.com



INDUSTRY + INNOVATION + LIFESTYLE



## FlyTCL.com



3000 CURTIS KING BOULEVARD  
FORT PIERCE, FL 34946  
ST. LUCIE COUNTY, FLORIDA



# Why St. Lucie County, Florida?

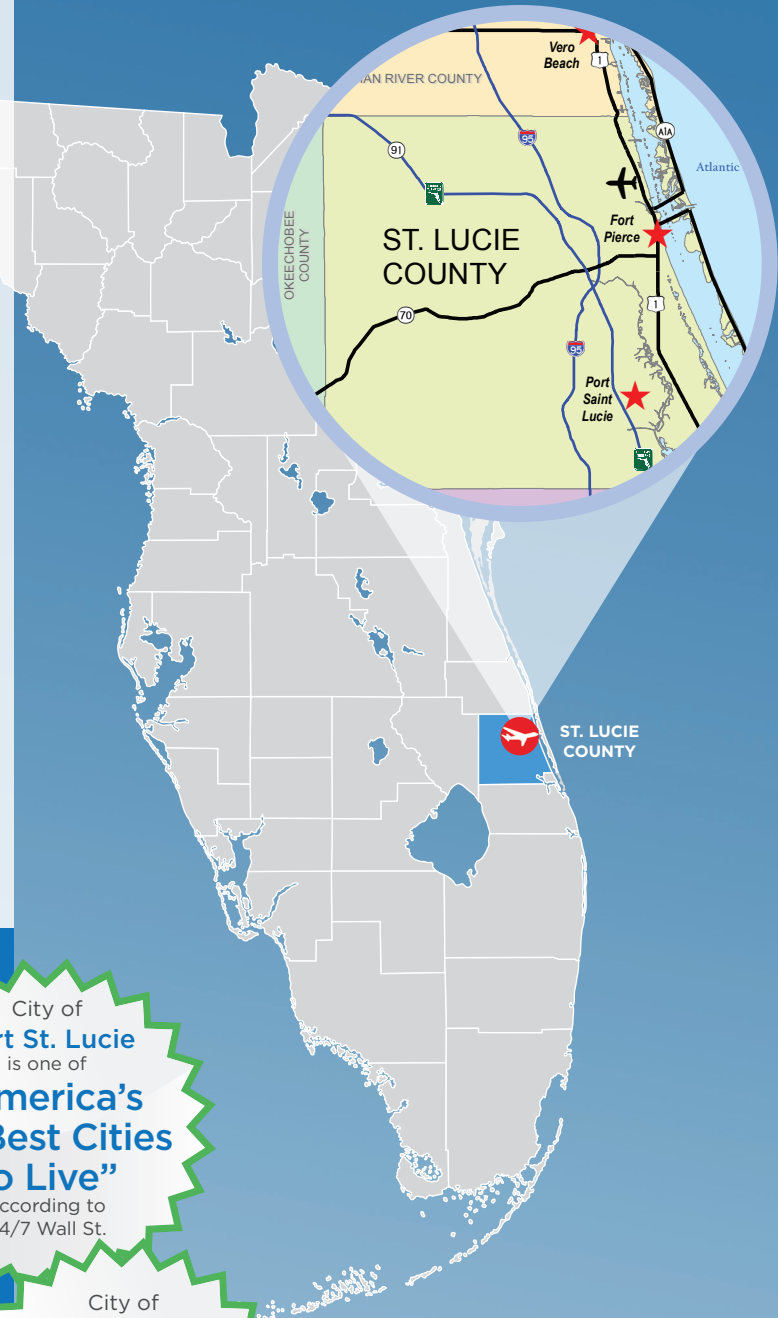
Treasure Coast International Airport, known in the aviation world as the “Gateway to the Bahamas,” is perfectly poised for economic growth. Situated within 3,844 acres that is already zoned for commercial and industrial uses, there is ample opportunity for aviation expansion and development. In fact, Florida was ranked the #1 state for aviation manufacturing attractiveness by Pricewaterhouse Coopers, and is home to more than 2,000 aerospace and aviation companies, employing over 82,000 workers across the state.

St. Lucie County is an ideal location for aviation companies looking to move or expand to Florida. Strategically situated on the southeast coast of the Sunshine State, minutes away from Florida’s Turnpike and Interstate 95, St. Lucie County is midway between Central and South Florida markets -- including Orlando, Miami, Ft. Lauderdale and the Palm Beaches. In addition, St. Lucie County has close access to rail and seaports.

- Housing in St. Lucie County is more affordable than in many communities throughout South Florida. The lifestyle possibilities are endless: from ocean- and water-front properties, to single family homes in master-planned communities, to high-rise condos, St. Lucie County has multiple options to call home.
- With an average temperature of 74°F and sunny skies nearly 80% of the time, residents and visitors enjoy an abundance of environmental, recreational and cultural activities all year long in our tropical, South Florida, coastal community.
- The county is home to the historic City of Fort Pierce, the vibrant City of Port St. Lucie and the breathtaking beaches of Hutchinson Island.

City of **Port St. Lucie** is one of **“America’s 50 Best Cities to Live”** according to 24/7 Wall St.

City of **Fort Pierce** is ranked **#1 in 50** Best Small Town Main Streets in America



# The Airport

Treasure Coast International Airport (FPR) provides a wide range of aeronautic services including: aircraft maintenance and storage; flight training; business and corporate travel; air taxi and charter services; fueling and fuel storage; medical transport; food services; missionary flights; yacht building and emergency and rescue.

A General Aviation airport with unlimited development potential.

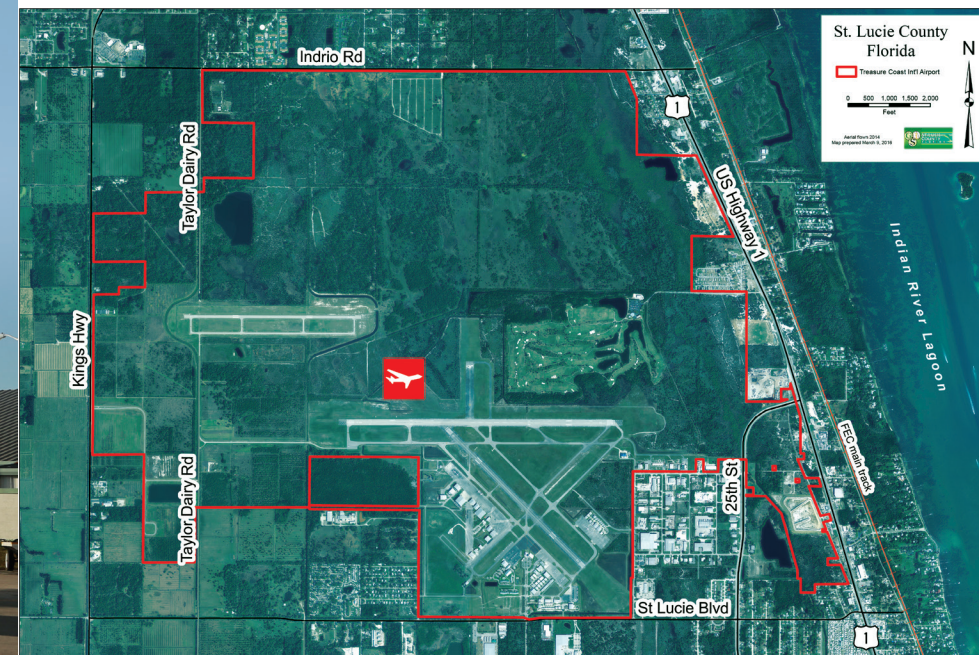
- FPR: 3,844 acres
- MIA: 3,300 acres

Over 1,000 acres ready for industrial distribution and warehousing development.

- FAA Air Traffic Control Tower
- On-site Aircraft Rescue and Firefighting Services
- Instrument Landing System, 6,492 ft. Runway
- U.S. Customs and Border Protection Service
- Designated as a U.S. Customs Port of Entry

## Aviation and Aerospace companies already headquartered in St. Lucie County

- Air & Sea Recovery
- Aircraft Service Center
- Aircraft Turbine Works
- APP Jet Center Aviation (Fixed-Based Operator)
- Aviator College of Aeronautics
- Chip’s Custom Painting
- Jetcraft Aerostructures
- Missionary Flights International
- NavTech
- Phoenix Metal Products
- Tiki Restaurant
- Treasure Coast Avionics



- Pricewaterhouse Coopers ranks Florida’s industry talent #1 in the U.S., making it easy to find qualified workers.
- Virtually every major defense contractor from the U.S. and abroad has significant operations in Florida, generating a robust supply chain.
- A cost-competitive environment, favorable tax structure, no personal income tax, industry-specific incentives, workforce training programs and superior quality of life make it easy to do business in Florida.