

The Art of Building Vibrant Communities



Public art is one of many examples of St. Lucie County's quality of life.

2026

Mid-Year Report

INSIDE

- Project updates
- Telling the St. Lucie County story
- Initiatives, Events and much more



Robert Barfield
Chair



Letter from the Chair

Dear EDC investors and partners,

As this is the first chairman's letter of my two-year term, I'll begin by saying that I am deeply honored to be leading an organization that is so vital to the overall prosperity of the now 400,000+ people who live here in St. Lucie County.

With Port St. Lucie initially created as bedroom community for retirees and Fort Pierce focused on agriculture and marine industry activities, this county's employment base had to be rebuilt from the ground up – and it is absolutely amazing what has been accomplished over just the last decade thanks to community leaders, the EDC, our partners, and the forward-thinking of our elected officials.

The latest available U.S. Census figures show a 32% increase in St. Lucie County based jobs between 2013 and 2023 from 67,683 in 2013 to 89,638 in 2023. That's an additional 21,952 jobs available to our residents who now don't have to drive somewhere else for work every day! Think about the economic benefit of those wages being spent in St. Lucie County versus another county or community. That's potential direct financial support for other businesses as well. Plus, the enhancement of quality of life for those who get additional time to spend with family and friends instead of time spent commuting to a job outside of the community.

While the EDC's primary mission is to enrich the community's economic vitality by attracting new businesses, supporting the expansion and retention of existing companies, and fostering a collaborative, business-friendly environment to create high-paying jobs for residents, our organization also plays a very important role in connecting people – connecting people to each other, to resources, to potential business partners, to their elected and appointed officials.

These connections matter, recently we were able to introduce a Port St. Lucie manufacturer to a Fort Pierce based supplier – both were companies the EDC had assisted in the past but neither knew the other was just a handful of miles away. The introduction may well serve to boost the bottom lines of both companies and foster additional collaboration that ultimately might create more jobs.

Then, in May, when Amazon announced a two-year shutdown of the warehouse off Midway Road to make significant facility upgrades, company officials came to the EDC first. By the time the employees were informed, Amazon, the EDC and CareerSource Research Coast had put together a robust plan of action to find jobs for many of the workers who will be displaced. Within days, we connected several of our new and expanding companies to Amazon's employment transition firm and several job fairs have already begun with others planned. EDC was seen as the connector with the business community and as an instrumental part of the solution.

Connecting and sharing content with the county's business and government leaders through our regular partner luncheons and special events remains one of EDC's strong suits. We are looking to create additional connectivity with businesses and community leaders through additional channels, more to come.

Meaningful progress depends on a shared commitment to common goals, and the relationships that drive collaboration are often built outside the conference room. As we move into the second half of the year and beyond, the EDC team is committed to expanding and enhancing these opportunities for engagement and partnership.

In addition to my role as Chair, the EDC welcomes several leaders to key positions: Jill Marasa as Chair-Elect, Tammy Matthew as Treasurer, and Wes McCurry as President. While these are new roles for each of us, our mission remains unchanged. We share a strong commitment to making St. Lucie County the very best place to live, work, and do business, and we look forward to building on the momentum and success of our organization in the years ahead.

To echo a consummate leader, former U.S. Navy Admiral William McRaven, "If you want to change the world, find someone to help you paddle." I invite you to reflect on how your leadership can help the EDC paddle our boat and widen our collective impact for the betterment of the community.

With gratitude,

Robert Barfield

Chair, EDC Board of Directors





Wes McCurry
President



Letter from the President

Over the years that I've been part of the EDC team as a board member, stakeholder or as the EDC's senior VP, I've read through the Mid-Year and Annual Reports and Pete's letters in which he regularly remarked on how busy it's been at the EDC. That was always true, but I didn't fully realize just how much our small team accomplishes as time flies by.

We respond to dozens of inquiries from prospective companies near and far; work hand-in-hand with projects going through permitting, construction, inspections and hiring; put on more than a dozen events a year – from 90-minute networking lunches to the multi-day Leaders on the Links; constantly market the county and our cities over multiple platforms and events; fundraise; support our workforce and future workforce; connect people and companies; and so much more – this Mid-Year Report hits the highlights. I hope you'll take a few minutes to read through it.

St. Lucie County is also a standout for quality of life with beautiful beaches, parks of all shapes and sizes, and a vibrant arts community. We chose to celebrate our arts community on the cover of this report by showcasing a sampling of some of the public art found throughout the county.

When seeking to relocate, companies have a variety of requirements, but there are a few enduring constants on all the lists – workforce, education, and quality of life. We have a fantastic and growing workforce, regionally numbering more than 394,000. Our public school district is now A-rated with extremely strong career and technical education programs. The Aspen-Award-winning Indian River State College has equally strong programs, a state-of-the-art workforce training center, and the Promise Program.

We recently took a look back at some mission-critical statistics I'd like to share, using the latest available numbers from the U.S. Census and Economic Strategy Center:

- ✓ Just 64 of 85 EDC projects announced between 2017-2024 created 21,721 jobs, generating \$1.2 billion in income.
- ✓ The St. Lucie County average wage has increased by 61.48% between 2009 and 2024.
- ✓ The number of jobs in St. Lucie County has increased 41.69% from 63,820 in 2009 to 90,429 in 2024.

We are very fortunate to have the support of St. Lucie County, the City of Port St. Lucie, the City of Fort Pierce and our business partners in making this kind of a difference for our residents. We could not do any of this without their support and without everyone pulling in the same direction to help the EDC achieve its mission of enriching the economic vitality of our community and creating quality jobs for our residents.

Wes McCurry

President

Economic Development Council of St. Lucie County



NEWLY

ANNOUNCED PROJECTS



Amazon Cold Storage WAREHOUSE

In May, **Scannell Properties** received a major site plan amendment from the City of Fort Pierce on its 69-acre parcel at Kings Highway and White Road for a 1.1 million square foot cold storage and distribution facility for Amazon. Approximately 60,000 square feet will be used for ancillary office space. Once fully operational, Amazon plans to employ 745 at this facility.

Chip's Custom Painting EXPANSION

Located at **Treasure Coast International Airport**, Chip's Custom Painting refinishes aircraft through state-of-the-art painting services. The company is investing \$1 million to expand its 18,000-square-foot facility by another 12,000 square feet. Completion is anticipated in mid-2026, after which Chip's plans to add an additional ten employees at 121% of the county's average wage.



Expert Shutter Services EXPANSION

This is the second major expansion for Expert Shutter Services, a homegrown Port St. Lucie company since 1986. In 2017, the company opened a 24,780-square-foot manufacturing facility. Now, Expert Shutter Services is expanding again, making a \$4 million investment building out a 111,000-square-foot, state-of-the-art manufacturing facility in the **Glades Logistics Center** off Midway Road. Recently purchased by the global company **Hunter Douglas**, Expert Shutter Services anticipates increasing its workforce from 97 in May to approximately 200 within two years. Production is expected to begin in the new facility in early June, with the move fully completed by November.



NEWLY

ANNOUNCED PROJECTS



MedSquare® PORT ST. LUCIE

Cleveland Clinic will be the anchor tenant in MedSquare®, a 68,000-square-foot Class A medical office building on Becker Road in Port St. Lucie. **Flagler – MAS AJP** will be developing the building and offering the remaining 34,000 square feet for lease. The anticipated completion date is late 2027. Estimated employment for a medical office building of this size, based on national data, is 115.

PROJECT Orchid

An international window manufacturing company is planning to build a modern, fully enclosed production facility on a 73-acre Rock Road property, off Kings Highway. The investment in the 1.4 million-square-foot facility and equipment is anticipated to exceed \$300 million. The company plans to hire, over a five-year period, 1,005 employees at 116% of the county's average wage, creating an annual \$53.8 million local payroll.



Tradin Organics



Freshco/Indian River Select produced fresh orange juice at a 16,375-square-foot leased facility at the **Fort Pierce State Farmers Market** off U.S. 1, employing between 55-95 workers until December 2025 when the company closed. Tradin Organics, an international company based in Amsterdam, is in the process of establishing operations at the same location for the production of organic orange juice. The company currently produces orange juice from two major growing regions in Mexico, as well as hundreds of other organic products around the world. Tradin Organics is currently in permitting process and anticipates beginning operations in mid-September.



IN THE

PIPELINE



Project AZUCAR

← This manufacturer upcycles agricultural waste as a replacement for petroleum-based single-use products. The company plans to construct a 250,000-square-foot facility to house production, distribution and its corporate headquarters and anticipates employing approximately 250 workers.



Project BOXER

← A manufacturer in the sporting/recreational equipment industry seeks to construct a state-of-the-art 50,000-square-foot production and assembly campus that would employ 309 workers.



Project CAST

← A foreign company is considering St. Lucie County for the manufacture of aluminum architectural products in an existing facility of approximately 100,000 square feet. The manufacturer anticipates employing 50 office/management workers and 200 production workers.



Project COBIA

← A foreign-based manufacturer of intelligent building solutions is seeking a 75,000- to 125,000-square-foot location for a manufacturing facility. The company plans to hire 250 employees.



Project PEGASUS

← An aerospace and defense firm is seeking locations near an airport to build a 300,000-360,000-square-foot aircraft production facility that would employ between 380-500 high-skilled workers.



Project ROUTIN

← A foreign supplier of popular food service products with an existing US customer base is seeking to open its first stateside production facility in an existing approximately 25,000-square-foot building with a long-term lease. Projected job creation is between 15-25 positions.



Project VITALITY

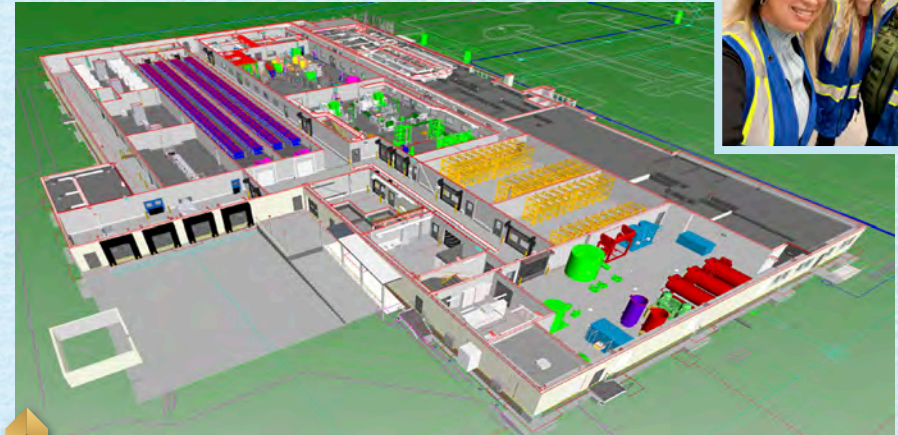
← A publicly traded life sciences company based in Europe is seeking an existing building or pad-ready site for a 100,000- to 150,000-square-foot clean manufacturing facility. The company anticipates hiring 500 workers at average wages that significantly exceed the county's average.

This *In the Pipeline* list includes projects with the potential to locate in St. Lucie County but which are still in early review stages with no decisions or commitments made. These highly competitive projects may move forward within St. Lucie County, may go elsewhere, or may never materialize.



MILESTONES & COMPLETIONS

The first phase of the **Costco Depot** in Legacy Park, a 622,685-square-foot cold and dry storage distribution facility, is complete. Operations began on April 20, shortly after helicopters placed 48 A/C units onto the roof on April 12. The warehouse is 100% solar-powered (one array of solar panels is shown here). More than 265 employees will work out of this building which is set up to quickly transfer products from vendors onto trucks to 45 Costco Warehouse stores throughout most of Florida.



Construction is complete on **LactaLogics'** human-milk processing and distribution facility in Port St. Lucie. Hiring for key positions is underway, as is equipment and process testing. Operations will be ramped up in stages with a grand opening anticipated for August. At full capacity, LactaLogics will be able to provide enough gently pasteurized, shelf-stable breast milk to feed 100% of the babies in NICUs throughout the U.S.



On February 10, **APP Jet Center** celebrated the re-opening of its renovated FBO and restaurant at **Treasure Coast International Airport**. In addition to the upgrades inside the FBO, APP added new hangars and improved parking and landscaping outside.



As of April 2026, the 3-mile Treasure Coast Circuit at **P1 Motor Club** had been roughed in, with opening anticipated in late spring. P1 Motor Club, in western St. Lucie County, is the largest motorsports project in Florida and was recently featured in *Florida Trend*. The \$200 million, 650-acre club, which is largely still under construction, has already sold 240 of 600 potential memberships.

MILESTONES & COMPLETIONS



▲ The 159-acre **Pruitt Commerce Center** by **Ashley Capital** has been accepted as an FPL Florida First Sites location. The Class A business park off Kings Highway will consist of 13 buildings ranging from 50,400 to 216,300 square feet and is designed for smaller or mid-size companies. In April, Ashley Capital received **St. Lucie County Commission** approvals necessary to move the project to its next development phase.



▲ With **Legacy Park at Tradition** substantially complete, the park's founders, the **Sansone Family**, held a dedication ceremony for the Tree of American Dreams in May. Internationally acclaimed Treasure Coast sculptor Geoffrey Smith created the custom eight-branched bronze sculpture. Located at the eastern entrance to the business park, the public art installation was privately funded by the **Sansone Group**. Leasing opportunities and a build-to-suit option are still available within Legacy Park, but the majority of the 425-acre Jobs Corridor site has been developed and is home to **FedEx Ground**, **Amazon**, **Costco**, **Cheney Brothers**, and others.



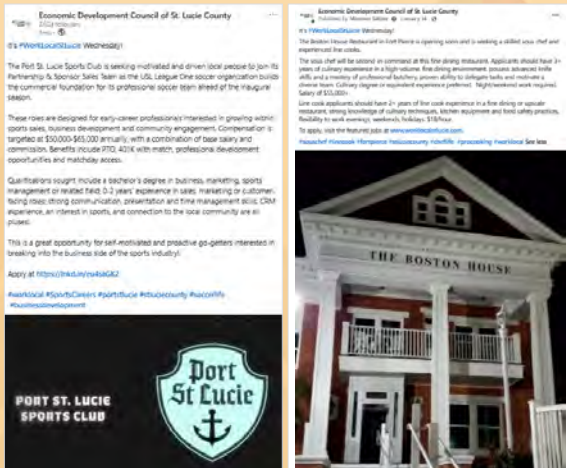
▲ **Inkas® Armored** has obtained approvals to begin operations in its temporary 30,000-square-foot location on Angle Road and the company has begun hiring for key positions. The planned 190,000-square-foot permanent manufacturing and headquarters campus in Fort Pierce is working its way through the approval process.





#WorkLocalStLucie

Our Wednesday job posts on Facebook, LinkedIn and in the Featured Jobs section of our website get noticed! Our two top posts so far in 2026 were, on Facebook, sous chef and line cook positions for the **Boston House** restaurant in Fort Pierce with 1,633 views; and, on LinkedIn, business development positions with the **Port St. Lucie Sports Club** with 708 views – posts for KEITH and the **District Planning Group** were close behind.



Kings Highway Jobs Corridor

In partnership with the **City of Fort Pierce** and **Fort Pierce Utilities Authority**, the EDC and **District Planning Group** moved forward with an independent Economic Impact Analysis (EIA) for a jobs corridor along **Kings Highway**, as a follow-up to last year's Phase I study. The Economic Strategy Center's EIA projected a potential for 21,291 direct jobs, a total economic output of \$5.9 billion and annual tax revenues exceeding \$80 million at full buildout. A three-year pilot program for a proposed overlay zone is currently under review.

St. Lucie EDC

The Solution: Opt-In Overlay District

Developers who choose to follow higher design standards get faster, simpler approvals — no rezoning required.

<div style="font-size: 0.8em;">BUILD BETTER</div>	<div style="font-size: 0.8em;">BUILD FASTER</div>	<div style="font-size: 0.8em;">CREATE JOBS</div>
<ul style="list-style-type: none"> Measurable design & landscape standards Class A Commerce Park character No metal facades or unscreened storage Consistent quality across jurisdictions 	<ul style="list-style-type: none"> Staff-level approvals for compliant projects Defined timelines — certain in/out dates Eliminate duplicative rezoning cycles Voluntary opt-in - predictability 	<ul style="list-style-type: none"> Target manufacturing, distribution, tech Mix of high-wage & entry-level positions Measurable job creation benchmarks Expand tax base for services & infrastructure

KEITH Talks



From left, Alex Lazowick and Kris Mory with KEITH; Wes McCurry, EDC; Port St. Lucie Mayor Shannon Martin; Richard Tambone with the Tambone Companies

In partnership with **KEITH**, the St. Lucie Economic Development Council brought together regional leaders and industry experts to discuss growth, economic development, community planning, and the future of the region as an added-value event for EDC investors and partners in March.

Incentives POLICY UPDATE

St. Lucie EDC Key Survey Findings

Economic Incentive Trends & Insights

- Eligibility Criteria:** Most EDOs require wage and job creation thresholds; fewer mandate capital investment thresholds.
- Performance-Based Incentives:** Many jurisdictions require compliance for tax exemptions; clawback provisions recommended.
- Compliance Monitoring:** Long-term monitoring is critical to maintaining transparency and public trust.

Key Finding: City's requirements align with industry standards.

With the assistance of the **Florida Economic Development Council** and **Planning & Economic Strategies LLC**, over the last year the EDC has been researching incentive options and refining our recommendations for updates to the economic development incentives available to targeted industry projects in the county and cities. In May, the county adopted a new points-based incentive matrix in the first substantive change to the program since the 1990s. Discussions related to incentives updates were ongoing at the **City of Port St. Lucie** and **City of Fort Pierce**.



Amazon Warehouse temporary closure

Amazon has big plans for its 1-million-square-foot facility off Midway Road. In May, the company announced it would be temporarily closing its pre-first-mile sortation center in September to expand the building's mezzanine by 870,000 square feet and transform the site into an Amazon sortable fulfillment center, one of the company's most advanced designs with an additional investment of more than \$200 million. Because of the ongoing relationship the EDC has maintained with Amazon, company officials reached out to us to assist with placement efforts for the 850 employees currently working at the warehouse. Connections with many employers across the county enabled the EDC to quickly arrange for multiple job fairs for the affected employees.

FEDC Best Practices Seminar

The strong partnership supporting job creation and economic diversification between the EDC, the county and the cities that led to great success over the past decade has not been unnoticed within the state and beyond. The **Florida Economic Development Council** and **Hickey Global Economic Development Consulting** asked the EDC and local officials to put together a webinar for an economic development best practices series. Our topic: Industrial development success resulting in world-class commerce centers. **Wes, Kadian**, Deputy County Administrator **Mayté Santamaria**, County Planning & Development Services Director **Ben Balcer**, FPL Economic Development Director **Sherry Ambrose**, Port St. Lucie's **Russ Blackburn**, EDC board members **Peter Crane** and **Richard Tambone**, and **Leslie Olson** with District Planning Group all participated in a widely viewed presentation. If you missed it, the video is available at <https://youtu.be/sqwwxlttyCA>.

February 19, 2026

FAC & FEDC: Best Practices for Economic Development

FLORIDA ECONOMIC DEVELOPMENT COUNCIL | FAC | FLORIDA COUNTIES | HICKEY GLOBAL | St. Lucie EDC

OUTREACH

On the road and at home, the EDC took advantage of multiple opportunities to showcase the benefits of doing business in St. Lucie County.

Telling the

St. Lucie County

story



Wes, Kadian, Rachel & Glexi attended FPL's Powering Florida Illumination 2026 in Daytona Beach in February for interactive discussions with and presentations by leading national site selectors.



Also in February, Wes was a featured panelist at CCIM East Coast's annual Treasure Coast event, held this year in neighboring Martin County.



In April, the EDC and FPL once again sponsored the Bisnow Treasure Coast State of the Market event, held at the Crane Club at Tesoro. Wes and EDC Board Chair-Elect Jill Marasa, along with County Commissioner Cathy Townsend, Port St. Lucie Mayor Shannon Martin, and Fort Pierce Mayor Linda Hudson participated in panel discussions with more than 185 in attendance.



St. Lucie EDC

Speed to Market Case Studies

<p>41 Days for Site Plan Approval Adjacent Greenfield Site</p> <ul style="list-style-type: none"> Pursuit Boats 3-Phase Project 536,000 square feet 72 acres 	<p>75 Days for Site Plan Approval Greenfield Site</p> <ul style="list-style-type: none"> 1.87 Million square feet Future expansion included on 192-acre site plan 	<p>91 Days for Site Plan Approval Greenfield Site</p> <ul style="list-style-type: none"> Seefried Properties for Amazon 1.1 million square feet 110 acres 	<p>108 Days for Site Plan Approval Greenfield Site</p> <ul style="list-style-type: none"> The Silverman Group 1.1 million square feet 132 acres
---	--	---	---

INDUSTRY • INNOVATION • LIFESTYLE

Between February 26 and April 20, Wes and Kadian presented St. Lucie County to 19 site selectors based in Georgia, South Carolina, New York, New Jersey, Pennsylvania, Illinois, California and even London via Zoom. From quality of life to demographic and development data, we had a compelling story to share!

In conjunction with its annual conference in May, the Florida Economic Development Council offered a one-day program for EDO execs for quality networking with site selectors. Wes and Kadian spent an eventful day with the group touring the Kennedy Space Center.





Telling the story

Advertising & Marketing



The EDC is running two year-long digital campaigns with **ExpansionSolutionsMagazine.com** focusing on the county's research/biotech industries and advanced manufacturing. Rotating ads appeared on the home page for three months and remain on the website for a full year.

For the third consecutive year, we ran a three-month audience extension campaign with **Trade & Industry Development**. Ads like this were served up to the magazine's website visitors as they scrolled through their Facebook feeds or searched Google. These ads were viewed 132,385 times and generated 2,840 click-thrus to our website.



St. Lucie County, Florida WELCOMES

a global manufacturer of armored vehicles to our growing advanced manufacturing community.

Inkas® USA joins A-1 Industries of Florida, Accel International, Advanced Machine, 3i of Central, JMI Boats/Lactologica, JMWreck Boat Group, OCULUS Surgical, TASCOC, TAMCO, and many more.

Why St. Lucie?

- Fast-growing regional workforce of 387,000+
- A*-rated public schools offer 58 career & technical programs
- In 2025, 2,925 high school seniors graduated with 4,773 certifications
- Aspen-award-winning state college offers 89+ career & technical programs
- Florida's most technologically advanced workforce training center supports the demand for trained manufacturing employees
- Class A Industrial/manufacturing space available now for immediate occupancy

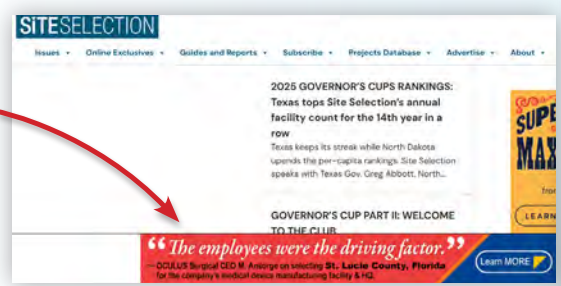
St. Lucie EDC

772.324.2014 | www.yourEDC.com

Area Development magazine's second quarter "Golden Shovel" awards edition includes this ad from the EDC welcoming INKAS to St. Lucie County. The website will feature four banner ads



of various sizes as well. The quarterly content premiered in late June. The EDC also advertised with **Business Facilities**, **Treasure Coast Business**, and **Indian River Magazine** during the first half of the year.



In conjunction with **Site Selection** magazine's Best to Invest issue, the EDC purchased display advertising in the magazine and a "catfish" banner ad that appeared on the magazine's website throughout the month of May. We saw definitive upticks in new visitors to our website during the month.

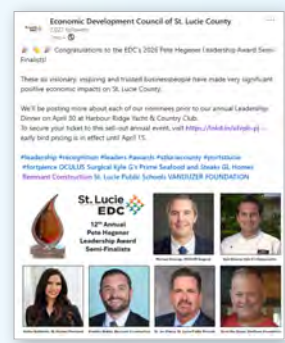
St. Lucie County
The gateway to South Florida

Located on Florida's east coast, midway between Miami and Orlando, St. Lucie County lies at the heart of the beautiful Treasure Coast.

- Home to the 01 largest city in the state
- Foreign Trade Zones available throughout the county
- Robust manufacturing, logistics, import-export, & emerging industry sectors
- State Class A logistics/manufacturing sites immediately available
- Join A-1 Industries of Florida, Accel International, BroadRange Logistics, Cleveland Clinic Florida Research & Innovation Center, Commander Bank, INKAS, Center for Translational Science, INKAS® Award, OCULUS Surgical, and Parrot Bait, TAMCO & more!

Population	Regional Workforce	Workforce Commuting Outside the County	High School Career & Technical Programs 2025	2025 High School Graduates
370,470	387,000+	81,923	4,773 certifications issued in 58 programs	2,925

St. Lucie EDC 772.324.2014
www.yourEDC.com

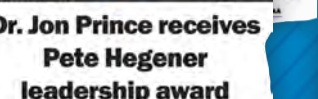
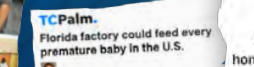
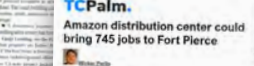
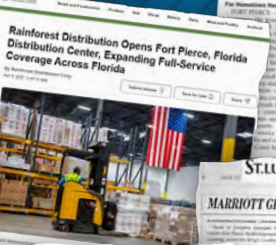
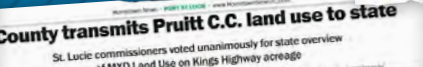
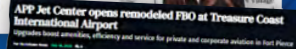
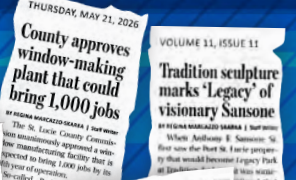


The EDC's LinkedIn and Facebook posts get attention, especially in the lead-up to the Hegener Leadership Award dinner. The April 7 LinkedIn post announcing the Leadership Award semi-finalists reached 2,035 users. The April 8 Facebook post announcing the award finalists garnered 14,066 views. As of June, the EDC had 4,478 Facebook followers and 2,022 LinkedIn followers. The 2026 total to from Jan. 1-June 4 of Facebook views was 116,901, a 46% increase over 2025!



Newspapers, TV, radio, magazines, trade press and newsletters, on line Coverage related to the EDC and TCCEED appeared in more than 76 stories reported from January through early June of this year. *Florida Trend* wrote extensively about P1 Motor Club in its May issue and County Commission Chair Jamie Fowler was featured on the statewide magazine's March cover. Project Orchid and the Costco Depot both received extensive coverage.

- AOL.com
- Business Air News
- Business Facilities
- Expansion Solutions
- Florida Trend
- Hometown News
- Orlando Sentinel
- Perishablenews.com
- Port St. Lucie City Manager's Annual Report
- St. Lucie Voice
- Sunland News
- Trade & Industry Development
- TreasureCoast.com
- Treasure Coast Business
- Treasure Coast Newspapers/TCPALM
- WFLX
- WPBF
- WPEC
- WPTV
- WQCS





Thank You, Azlina & Pete!

During February's annual meeting, the EDC Board of Directors surprised outgoing chair **Azlina Goldstein** and semi-retiring EDC president **Pete Tesch** with thoughtful, personalized gifts to thank them for their years of service to the EDC. While their roles have changed, the EDC is fortunate to still have the continuing involvement of Pete and Azlina – Pete as a part-time SASI (senior advisor for strategic initiatives) and Azlina on the EDC board as the immediate past chair and also as chair of the TCCEED board.



From left, international fashion designer Kallee Jackson with Azlina who is holding the one-of-a-kind cocktail dress created for her; Jordan Schwartz of Ohana Surf Shop delivering Pete's new longboard, custom-designed from the graphics used in the 2025 EDC annual report.

EDC Team Update



EDC Communications & Outreach Director **Maureen Saltzer** is retiring July 3 after five years of service as an employee and almost 15 years as an independent contractor. In addition to creating news releases, reports, presentations, marketing, website and social media content, and other communications, Maureen administered the EDC's Pete Hegener Leadership Award selection process starting as volunteer chair in 2017. Maureen is looking forward to doing lots of traveling in her retirement.



Wicker Perlis joined the EDC team on June 22 as marketing & communications manager. He comes to the EDC from Treasure Coast Newspapers where he has been the St. Lucie County watchdog reporter since 2023. He has also worked as a state government reporter for the *Clarion-Ledger* in Jackson, Mississippi, and the *Columbia Missourian*. He also has experience with social media, website content management, analytics, and research. Recently married, Wicker and his bride currently live in Jensen Beach.



Intern **Alouna Alincy** re-joined the EDC staff in May, after a successful first year at the University of Miami. She'll be with us until it's time for her to return to school in August. Alouna is assisting with TCCEED's summer internship program, video creation, and complex business development tasks. We are thrilled to have her back.





Jenn DuBey Career & Technical Education Scholarship **FUND**

SCAN ME



More than \$85,000 has been raised over the past three years for the **Jenn DuBey Scholarship Fund**, administered by the **Community Foundation Martin-St. Lucie**. As of May, 32 grants totaling \$53,000 have been granted so far for St. Lucie and Martin county residents seeking marine engine maintenance certifications, CDL licenses, plus welding, HVAC and advanced manufacturing training. Most of these recipients would not have been able to enroll in these programs without the assistance of the scholarship fund.

The EDC is very grateful to everyone who is helping keep Jenn's memory and mission alive by supporting the scholarship fund. We hope you will continue to keep these much-needed scholarship grants going as part of your charitable giving in 2026.



▶ **Damarius Noble**, an April 2025 scholarship recipient, shared a heartwarming picture of himself in front of his new truck. Damarius was awarded an initial \$2,500.00 scholarship in April, and a second scholarship to cover the remaining balance of about \$1,500 when he passed his CDL test. He went from sleeping on his friends' couches to renting a nice apartment that his children could live in with him. Truly life changing.

Two other recipients who earned their CDL licenses reported they were hired by a local trucking company at \$85,000/year and sent a note saying that the scholarships had "changed the direction of their lives."



FLORIDA ECONOMIC DEVELOPMENT COUNCIL CONFERENCE

In May, the EDC team traveled to Orlando for the **Florida Economic Development Council** annual conference. In addition to workshops, seminars, vendor meetings and networking with peers,

Kadian Knight and **Anita Fischer** attended the first in-person meeting of the FEDC EmERGE group, a new statewide professional development initiative for early-career economics and workforce development practitioners (pictured on the staircase). As part of the EmERGE program, Kadian and Anita participated in a hands-on training workshop by LocalIntel on its AI-fueled platform that will produce reports, RFIs, charts, maps and visuals in minutes without the need for designers or analysts. LocalIntel provides the dynamic interactive data visualizations on the EDC's website and we were one of the first organizations to sign up for the AI program which became available for use by the EDC team starting in late June.





This sharp-dressed duo, EDC partners **Mark Bock** and **Brandon Nobile** of **Remnant Construction**, celebrated the company's induction into the 2025 class of Florida Companies to Watch® by GrowFL in February.



EDC team members past and present gathered to cheer **Pete** on as he accepted the **Education Foundation of St. Lucie County's** 2026 Hall of Champions Lifetime Achievement Award at St. Lucie Trail on April 1.



In April, two St. Lucie County commerce parks were recognized by NAIOP South Florida – the Sansone Group's **Legacy Park at Tradition** as a nominee for Economic Impact Deal of the Year and Catamount Constructor's **Glades Logistics Center** as a nominee for Project of the Year.



As this report goes to press, EDC partners **OCULUS Surgical** and **TAMCO** are finalists in the South Florida Manufacturers Association Manufacturers Awards of Excellence – OCULUS Surgical in the 51-99 employee "Mavericks" category and TAMCO in the 200+ "Titans" category.

Board of Directors

2026

Mike Adams, Adams Ranch
Michael Ansorge, OCULUS Surgical
Nicolas Apfelbaum, Esq., Apfelbaum Law
Will Armstead, Boys & Girls Clubs of St. Lucie County
Terissa Aronson, St. Lucie County Chamber of Commerce
Robert Barfield, Seacoast Bank – **Chair**
Brian Bauer, CareerSource Research Coast
Austin Burr, GreenPointe Developers
Chirag Choudhary, MD, MBA, Cleveland Clinic
Javier Cisneros, PE, Fort Pierce Utilities Authority
Linda Cox, City of Fort Pierce
Peter Crane, Sansone Group
Marshall Critchfield, Florida Power & Light Co.
Lee Dobbins, Esq., Dean, Mead, Minton & Moore/TCMA
Phil Doumar, Doumar Insurance/EXCEL
Canieria Gardner, MBA, Incubate Neighborhood Center
Azlina Goldstein, GL Homes – **Immediate Past Chair**
Laura Hamel, BBL Hospitality
Justin Horoszko, MBA, FIU Center for Translational Science
Leonard Karam, Rangeline Road Industrial
Rod Kennedy, PE, Haley Ward
Cody Kiess, CORE Construction
Richard Kolleda, FACHE, Spherion
Ken Krasnow, Cushman & Wakefield
Leslie Kristof, Keiser University
George Landry, St. Lucie County
Chief Jeff Lee, St. Lucie County Fire District
Jill Marasa, Ashley Capital – **Chair-Elect**
Alex Masmela, MBA, HCA Florida Lawnwood Hospital
Tammy Matthew, Bank of America – **Treasurer**
Wes McCurry, St. Lucie EDC
Jesus Merejo, City of Port St. Lucie
Evan Mouhalis, Mouhalis Capital Management
Brandon Nobile, Remnant Construction
Cara Perry, Florida Atlantic University
Roxanne Peters, SouthState Bank
Jon Prince, PhD, St. Lucie Public Schools
Peter Scholer, CWR Contracting
Charles Sisca, Sisca Construction
Staci Storms, Broward, Palm Beaches & St. Lucie Realtors®
Richard Tambone, Tambone Companies
Chris Taraba, Verdex Construction
Andy Treadwell, M.Ed, Indian River State College – **Secretary**
Shrita Walker, MBA, MIDFLORIDA Credit Union
Jeremy Wiernasz, PGA Golf Club
Kara Wood, Hi-Tide Boat Lifts
Bob Zaccheo, LMHC, SAE, Project L.I.F.T.

EXECUTIVE COMMITTEE



Robert Barfield
Chair
 Seacoast Bank



Jill Marasa
Chair-Elect
 Ashley Capital



Tammy Matthew
Treasurer
 Bank of America



Andrew Treadwell, M.Ed
Secretary
 Indian River State College



Azlina Goldstein, Esq.
Immediate Past Chair
 GL Homes-Riverland



Wes McCurry
President
 St. Lucie EDC



Chirag Choudhary,
MD, MBA
Cleveland Clinic Tradition Hospital



Javier Cisneros, PE
Fort Pierce Utilities Authority



Cody Kiess
CORE Construction



Alex Masmela,
MBA, BSN, RN
HCA Florida Lawnwood Hospital



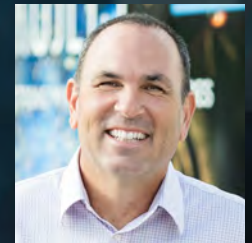
Brandon Nobile
Remnant Construction



Jonathan Prince, PhD
St. Lucie Public Schools

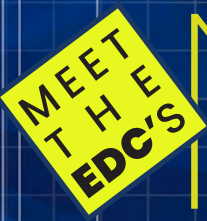


Shrita Walker, MBA
MIDFLORIDA Credit Union

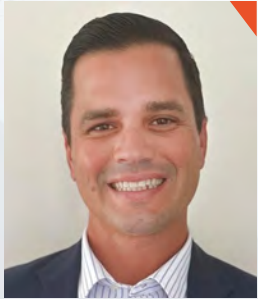


Bob Zaccheo, LMHC, SAE
Project L.I.F.T.





NEWEST BOARD MEMBERS



Leonard Karam

Leonard Karam manages **Rangeline Road Industrial, LLC**, which owns Rangeline Road Industrial Park in Port St. Lucie. Leonard comes from three generations of land developers and has more than two decades of expertise in real estate development resulting in multiple successfully executed

property developments.

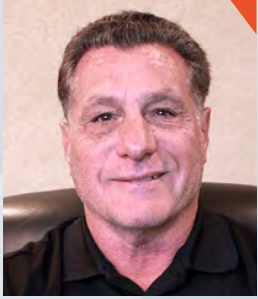
A leader in the development industry, Leonard relies on continuous learning and market analysis to ensure that his methodologies and strategies remain at the forefront of industry innovation and trends.



Cody Kiess

A sixth-generation Floridian, **Cody Kiess** is a recognized leader in the state's construction industry and is the president of **CORE Construction's** Florida operations. A graduate of Florida's public schools, Cody has overseen dozens of school construction projects in the region, driven by a passion to give back to the system that helped shape him.

CORE focuses on public safety, education, civic and healthcare projects. Recent St. Lucie County projects include the new Fort Pierce Westwood Academy high school. Founded in 1937, the construction firm employs more than 1,200 across the U.S. with a presence in 13 major markets nationwide.



Charles Sisca

Charlie Sisca is the founder and CEO of **Sisca Construction Services** and a lifelong veteran of the construction and real estate development

industry with deep roots in South Florida and decades of hands-on experience.

In 1999, Charlie launched the company with just one employee and has grown Sisca Construction Services into a leading commercial construction firm averaging over \$30 million in annual projects and employing 20 professionals. Under his guidance, the company has successfully completed projects across a wide range of sectors throughout South Florida.



Peter Scholer

An area manager with **CWR Contracting**, the leading civil construction contractor in Florida, **Peter Scholer** is based in Palm City

and oversees the company's asphalt plants and construction operations on the Treasure Coast. CWR has been in the business of building roads in Florida since 1976 and employs more than 1,200 skilled workers who labor around the clock to build connections between and within our communities.

Peter has more than three decades of experience in civil construction and previously worked with Ranger Construction.



Chris Taraba

Chris Taraba is a project executive for **Verdex Construction** with more than 14 years of industry experience. Over the past 10 years, he has been promoted within the company twice

and has held the role of project executive for the past four years. Chris was part of the 2021 Urban Land Institute Leadership Class and has been involved with several emerging leaders' business organizations, representing the voice of the millennial generation.

Verdex has become a notable contractor in Florida, building both ground-up and renovation projects. Verdex Construction is dedicated to supporting smart growth and meaningful partnerships throughout St. Lucie County.



INVESTORS & UPGRADES

Board of **ADVISORS**



New **INVESTORS & UPGRADES***

BOARD OF ADVISORS LEVEL

Core Construction Remnant Construction
(upgrade)

CHAIRMAN LEVEL

Rangeline Road Industrial LLC SISCA Construction Verdex Construction *(upgrade)*

PRESIDENT LEVEL

Cushman & Wakefield

LEADERSHIP LEVEL

Blyco Electric TD Bank
Lightbridge Academy *(upgrade)*
(upgrade) Port St. Lucie Soccer Club

CORPORATE LEVEL

Aircraft Turbineworks District Planning Group Timberline Real Estate Partners
Alliance Land Development *(upgrade)* Unbroken Branding
Custom Cleaning & Management Engineering Solutions, LLC Vickers Design Group
Management Flaig Commercial Group Wire3

AMBASSADOR LEVEL

Better Odds Academy CMBE Architecture, LLC Mileus Global Consultancy

Chairman-Level **INVESTORS**



*New investors & upgrades June 28, 2025 – June 15, 2026





Pete Hegener Leadership Award

Presented by: **BANK OF AMERICA**

The recipient of the Pete Hegener Leadership Award exemplifies the qualities of the Tradition developer who passed away in 2012: a visionary, a trusted role model and leader whose inspiration and achievements impact the quality of job creation, economic vitality and business growth.



Dr. Jon Prince holding the Hegener Leadership Award with Tammy Matthew, left, and Susan Rabinowitz.

In 2026, the 12th annual award was presented to **Dr. Jon Prince**, St. Lucie Public Schools superintendent. The Leadership Dinner, presented by Bank of America, was celebrated on April 30 at Harbour Ridge Yacht & Country Club.

In 2025, under Prince's leadership, St. Lucie Public Schools earned its first "A" district rating, placing SLPS in the top third of all Florida districts. The importance of this achievement cannot be underestimated as companies, investors and families use school ratings as a primary factor in relocation decisions, noted EDC President Wes McCurry. Prince is also fundamentally reshaping the talent pipeline for St. Lucie County by intentionally building bridges between education and economic development, and, as superintendent, Prince is responsible for nearly 6,000 employees whose salaries fuel the county's economic engine.



Finalist Azlina Goldstein with Bank of America's Susan Rabinowitz.



Kyle Greene, right, accepts his finalist award from Denise Hegener while Dr. Jon Prince looks on.



Port St. Lucie Mayor Shannon Martin with finalist Kyle Greene, left, and EDC SASI Pete Tesch.



From left, EDC President Wes McCurry, Ana McCurry, State Rep. Toby Overdorf, Karen and Rod Kennedy.



Christy Romano and Andrea Anicito check out Christy's nominee poster during the reception.



EDC Chairman Robert Barfield with his wife Christy.

Thank you to our sponsors! We couldn't do this without you!



EDC EXCEL

UPDATE

LEADERSHIP TEAM



Phil Doumar
Co-Chair
Doumar Insurance



Roxanne Peters
Co-Chair
SouthState Bank



Drake Chamberlin
Membership Chair
SLC Commercial



Emily Gavel
Events Chair
Native Health Primary Care



Marissa Gleockler
Communications Chair
Boys & Girls Clubs of St. Lucie County



Crystal Perez
Admin Chair
District Planning Group

EDC EXCEL was established to connect the next wave of leaders, decision makers, business drivers and entrepreneurs with established leaders in the region, further cultivating participants' leadership skills, career path development and meaningful business connections.



The **5th annual tournament**, held at Quail Creek Sporting Ranch in January, was another sold-out success! **HBK CPAs & Consultants** took home the honors for the top scoring team. Kelly Johnson from **RV Johnson Insurance** was the top scoring female shooter, but we ended up with a four-way tie for best male shooter. Steve Wood, Shawn Peter, Murray Fournie, and Tom Montano all shot 96! A subsequent shoot-off for the win went to Steve Wood.

Proceeds from this event help defray the cost of the EXCEL Speaks leadership seminars. Thank you to **UES**, this year's title sponsor, as well as **Dean Mead, TD Bank, Brothers Construction Inc., SouthState Bank, RV Johnson Insurance, Auto-Owners Insurance, and UBU Brands!**



Top female shooter Kelly Johnson lines up a shot.



Top male shooters: from left, Shawn Peter, Tom Montano, Steve Wood and Murray Fournie



Brandon Nobile and Anita Fischer



Team UES, title sponsors



Finn Peters, the youngest member of SouthState Bank's team

Don't miss the **6th Annual EDC EXCEL Sporting Clay Tournament** on January 22, 2027!

So far this year, EDC EXCEL arranged informative, behind-the-scenes tours of **OCULUS Surgical** and the **Florida International University Center for Translational Science** in Port St. Lucie.



EDC EXCEL members and guests toured **OCULUS Surgical's** new state-of-the-art manufacturing, office and warehouse facility in the Tradition Center for Commerce. This 60,000 SF facility is **OCULUS's** headquarters for the Americas.

Treasure Coast Center for Educational & Economic Development, the EDC's tax-exempt nonprofit focused on workforce, entered its second year of operation in the fast lane.



Website UPGRADES

With the help of **WebSited**, www.TCCEED.org continues to develop. A toggle switch to view the website as a partner or a student and in-depth information on career pathways in seven employment sectors were added recently.

The response is best illustrated by a text received from a parent: *"I've never seen him [her son] excited about anything in years...it's basically a one-stop shop and, in my opinion, what should be mandatory for young men like him. When he came to me for help a few weeks ago, I honestly did not know how to help him"...* until she found the TCCEED website.

Executive Director **Anita Fischer** explained that this was a great example of TCCEED's mission in action – to connect employers to workforce and future workforce, and to connect students and their parents to career resources within the school district and beyond.

Strategic Doing™



On March 11, TCCEED convened more than 40 community leaders, educators, employers, nonprofit partners, government officials, and youth representatives for a Strategic Doing Workshop facilitated by **District Planning Group** and supported by **Sage Pathways**. The workshop was designed not to present a finished plan, but to gather the wisdom, perspectives, and assets of the community to help shape TCCEED's strategic direction—its purpose, positioning, priorities, and future readiness.



Counselor Tour

In February, TCCEED organized a tour of **Aircraft Turbine Works, Apollo Group, and the Fort Pierce Utilities Authority** for **St. Lucie Public Schools** counselors and CTE educators. Company executives shared the types of careers available in their industries and the skills and attributes they want their employees to possess.

Student Career FAIR

In alignment with the **St. Lucie Public Schools** Classrooms2Careers initiative, TCCEED helped organize the 2026 Student Career Fair, bringing in almost 100 employers to meet with approximately 1,200 of this year's juniors and seniors. Some employers were hiring that day and others participated so the students could learn about the wide variety of careers available to them right here at home.



Hard Hat HUSTLE

In May, TCCEED worked with a coalition of organizations – **Project LIFT**, the **Boys & Girls Clubs of St. Lucie County**, **St. Lucie Public Schools** Classrooms2Careers, and founding sponsor **Heritage Concrete Construction** – to offer a hands-on event designed to introduce young people 17+ to real opportunities in the skilled trades, construction and manufacturing industries. The 40 participants even received new steel-toed work boots to keep. The three-day event ended with a signing day with three hired outright, three accepted into apprenticeships and more with follow-up interviews pending.



The 40 participants even received new steel-toed work boots to keep. The three-day event ended with a signing day with three hired outright, three accepted into apprenticeships and more with follow-up interviews pending.

SUMMER Internship Program

TCCEED's second annual summer internship program got off to a great start with orientation week beginning June 8 for team building and soft skills training at the **Boys & Girls Clubs of St. Lucie County**. The 60 rising seniors and recent **St. Lucie Public Schools** graduates started their six-week paid internships June 15 at 50 local businesses. The interns' stipends are underwritten by an anonymous grant through the Boys & Girls Clubs.



GRANTS & Awards

So far in 2026, TCCEED's programs have earned significant support from individual donors and through three major grants!

- For the second year, the summer internship program has been underwritten by the **Boys & Girls Clubs of St. Lucie County**, funded by an anonymous donor.
- TCCEED has been confirmed as the recipient of a substantial grant from **The Community Foundation Martin – St. Lucie**.
- And, in June, TCCEED received a \$100,000 grant from **Truist Foundation** to enhance the adult workforce program.

We are tremendously thankful for the support we have received from these three fantastic organizations and all of you!

DONATE



As the organization builds on its amazing track record, more grant opportunities will follow. TCCEED is a 501(c)3 organization and **accepts tax-deductible donations** from individuals, companies and foundations.

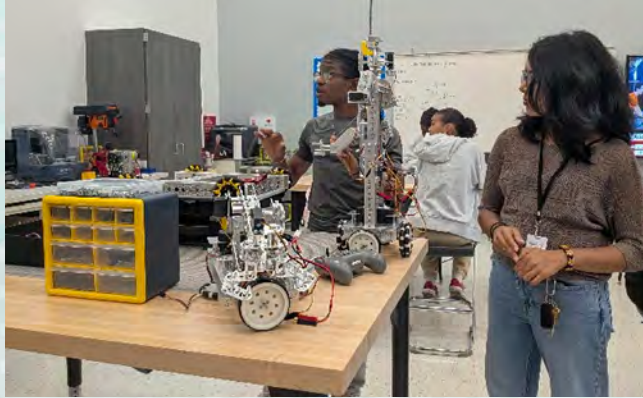


TCCEED was recognized with a St. Lucie County Chamber of Commerce Business & Industry Award in the Division 1 nonprofit category.



LUNCH & LEARN

In addition to bringing educators to businesses, TCCEED brings business leaders to **St. Lucie Public Schools'** high schools to experience the district's incredible Career & Technical Education programs. In February, a large group of employers toured the new **Fort Pierce Westwood Academy** to learn about its culinary, veterinary assisting, agriculture, allied health, and applied robotics & engineering programs.



TCCEED Board



Azlina Goldstein
Chair



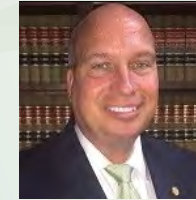
Brandon Nobile
Vice Chair



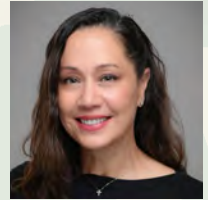
Trisha Hawthorne
Treasurer



Nikita Lloyd
Secretary



Thom Epsy
Director



Rita Evans
Director



Kallee Jackson
Director



Marissa Gleockler
Ex-officio



Dr. Helen Wild
Ex-officio

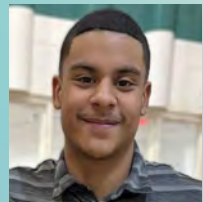
TCCEED Staff



Anita Fischer
Executive Director



Sarah Dwyer
Programs Consultant



Mikael Baltodano
Summer Intern

The TCCEED Board of Directors expanded this year, adding three new directors and two ex-officio members. **Sarah Dwyer** joined the staff as programs consultant and **Mikael Baltodano** returned this year as TCCEED's summer intern.



UPCOMING EDDC events

➤ **EDC Partner Lunch Meetings** ➤ *Most held at MIDFLORIDA Event Center*
11:30a.m. – 1:00p.m.
August 4
September 1
October 6
December 1

➤ **TCCEED Beach Ball** ➤ *Square Grouper Tiki Bar, 1920 Seaway Drive, Fort Pierce*
THURSDAY August 27 5p.m.

➤ **Leaders on the Links** ➤ *PGA Golf Club, 1916 Perfect Drive, Port St. Lucie*

THURSDAY October 29	 LEADERS—on the—LINKS RECEPTION & AUCTION	6 – 9p.m.
FRIDAY October 30	 LEADERS—on the—LINKS GOLF TOURNAMENT	7:30a.m.

➤ **EDC EXCEL 6th Annual Clay Shoot**
January 22 | 2027
Quail Creek Sporting Ranch, 12399 NE 224th Street, Okeechobee

➤ **EDC's 13th Annual Leadership Dinner** ➤ *Crane Club at Tesoro*
April 29 | 2027
Featuring presentation of the **Pete Hegener Leadership Award**
Nomination forms will be available in early 2027

Past Hegener Award Winners Ed Massey, *Indian River State College* • Tom Wilkinson, *Seacoast Bank*
• Mark Robitaille, *Martin Health System* • Michael Minton, *Dean, Mead, Minton & Moore* • Alto "Bud" Adams, *Adams Ranch*
• Ken Pruitt, *state senator, state representative, and property appraiser* • Tammy Roncaglione, *CenterState Bank*
• Rob Lord, *Cleveland Clinic Martin Health* • Russ Blackburn, *City of Port St. Lucie* • Richard Tambone, *Tambone Companies*
• Lee Dobbins, *Dean, Mead, Minton & Moore* • Dr. Jon Prince, *St. Lucie Public Schools*



The **EDC** is uniquely positioned to help your expanding or relocating business take full advantage of resources available including:



SITE SELECTION



PERMITTING ASSISTANCE



INCENTIVE PROGRAMS



DEMOGRAPHICS AND MARKET RESEARCH



WORKFORCE DEVELOPMENT ASSISTANCE



CONNECTIONS TO PUBLIC/ PRIVATE RESOURCES



TRAINING GRANTS

Your **EDC** Staff Professionals



Wes McCurry
President



Rachel Savela
Chief Operating Officer



Anita Fischer
Director Workforce Readiness



Glexi Garcia
Business Manager



Kadian Knight
Director Business Development



Wicker Perlis
Marketing & Communications Manager



Maureen Saltzer
Director Communications & Outreach



Pete Tesch
Senior Advisor for Strategic Initiatives



Alouna Alincy
Intern



Staci Storms
Investor Development Consultant

The Economic Development Council of St. Lucie County, Inc. is a private 501(c)6 not-for-profit organization founded in 2000 and dedicated to enriching the economic vitality of our community through the retention and expansion of existing businesses and attraction of new businesses to St. Lucie County, in partnership with

CONTACT US

Economic Development Council of St. Lucie County, Inc.

1790 SW Gatlin Boulevard, Suite 202

Port St. Lucie FL 34986

(Located on the second floor of Seacoast Bank)

772.324.2014 | www.YourEDC.com

