



July 2021

FedEx Ground Port St. Lucie

FedEx Corporation Business Segments



\$84 billion revenue | 570,000 team members



- Overnight transportation service
- 220+ countries
- Global air/ground network



- Ground, day-definite package transportation
- Commercial and residential services



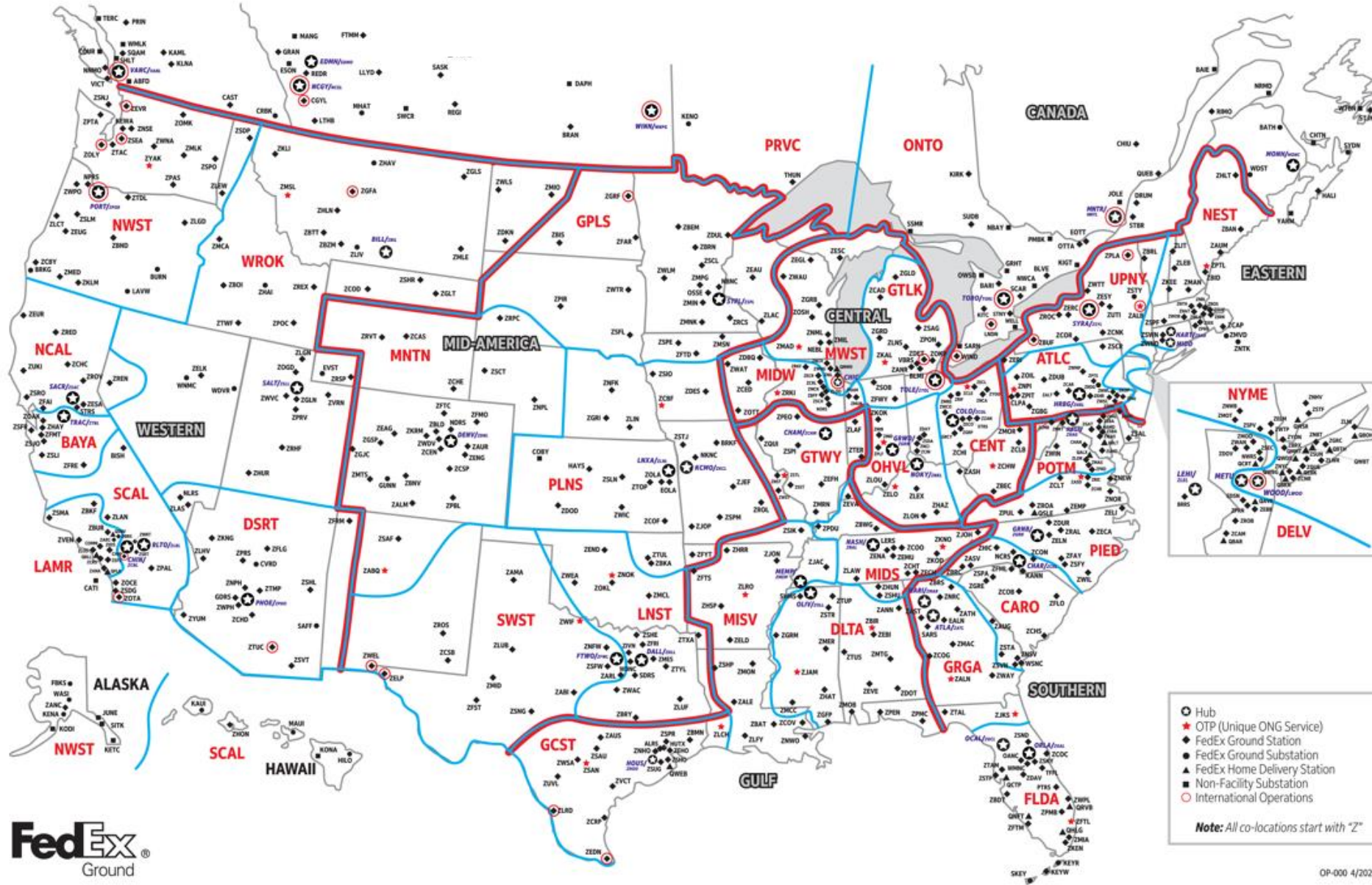
- North American provider of regional less-than-truckload services



- Provides sales, marketing, technology and customer service support for transportation businesses
- FedEx Logistics
- FedEx Office
- FedEx Solutions

Compete Collectively, Operate Collaboratively and Innovate Digitally

FedEx Ground Network FY22





Planning for Another Busy Peak Season

Optimizing network capacity to meet evolving customer needs

- ***11 new regional sortation facilities to serve large e-tailers in short-haul solutions**
- 5 new automated stations
- 11 expanded hubs and automated stations
- 4 large package facilities for efficient handling of items like TVs and furniture

*Port St. Lucie

Package Handler Key Duties and Responsibilities



- Repositions for physical loading, unloading and/or sorting packages by hand, including lifting pushing and pulling carrying and placing, in a safe and efficient manner.
- Package handlers (PHs) may be assigned to or rotate through various areas and positions such as Loading, Unloading, and Scanning packages.
- Determine the appropriate conveyor system by scanning packages.

Package Handler Key Duties and Responsibilities



- Ability to adhere to a five day work week.
- Ability to communicate in a team environment.
- Ability to understand and follow instruction regarding work duties and safety methods.
- Ability to use basic tools and equipment such as skate wheel rollers, dock carts, hand-held scanners, chutes and unloading devices.
- Strong communication and interpersonal skill; to work well in a fast-paced team environment.

FedEx is consistently named among the world's most valuable and admired brands

FORTUNE

“World’s Most Admired Companies”

Forbes

“World’s Most Valuable Brands”

FORTUNE

“100 Best Places to Work”

FORTUNE

“Best Employers for Diversity”

Black Enterprise

“50 Best Companies for Diversity”

Reputation Institute

“RepTrak 100”
List of the World’s Most Reputable Companies



CELL PHONE DISCOUNTS

FedEx Ground offers Cell Phone and Cell Phone Accessory discounts through Lifemart

The three major US carriers are included, T-Mobile, AT&T and Verizon

To access the website follow this link: <https://worklifebalance.lifecare.com/index.html>

First time visitors will need to register. The registration code is FEDEX

Once logged on follow these steps to access the Cell Phone Discounts section:

1. Top Left Click Lifemart
2. Click Electronics
3. Click Wireless

Please see a member of Management or HR for Further assistance.



TUITION REIMBURSEMENT

- Employees are eligible to receive an annual reimbursement up to \$5,250 per calendar year!
- There is no limit to the number of courses or credits that can be taken in an academic year.
- The Education Benefits Program is limited to tuition, textbooks and other allowable educational-related expenses as determined by the company
- The completed application and all supporting documentation must be submitted to Edcor on or before the last day of employment to be eligible for reimbursement. See HR for more information on how to access Edcor.



Operations Managers may be eligible for:

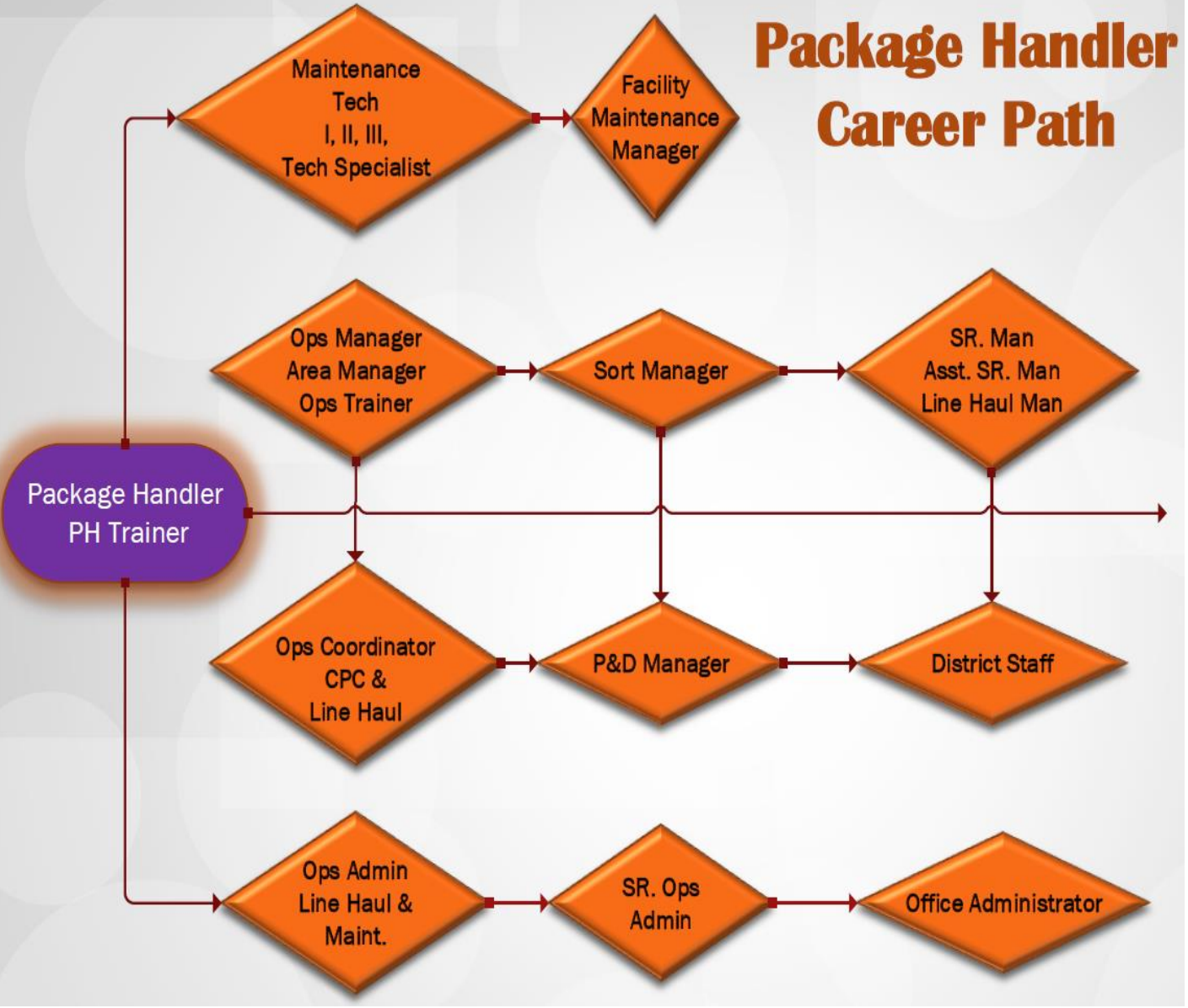


- Medical (Eligibility Immediately)
- Dental (Eligibility Immediately)
- Vision (Eligibility Immediately)
 - Stock Purchase Plan
 - Flexible Spending
 - 401K
- Tuition Reimbursement (\$5,250)
- Paid Time Off (Eligible to earn up to 3 weeks upon hire)
 - Holidays (6 paid holidays)
- Paid Parental Leave (2 weeks)
 - Discounts and more...

The logo features a stylized graphic on the left consisting of several thick, dark purple lines that branch out and curve in various directions, resembling a network or a set of paths. Each line ends in a solid dark purple arrowhead pointing away from the center. The background is a solid, medium-purple color.

PURPLE PATHWAYS

Package Handler Career Path



Opportunities for enhancement and promote from within philosophy:

To advance the professional growth of our employees, we provide exceptional training in leadership, quality, communications and technology.

We also offer on-the-job training to facilitate career advancement. We are a rapidly growing company with great opportunity for growth.

Questions?

